

2008 Houchens Industries/KHSAA Girls' Sweet 16 - Game Box Score

Henderson County Lady Colonels vs. Elizabethtown Lady Panthers

Date: 03/14/2008 Time: 6:30 pm CST Site: Diddle Arena-Bowling Green, KY Attendance: N

Visitors: Elizabethtown Lady Panthers

##	Name	P	FG	3 Pt	FT	PTS	ORB	DRB	TR	PF	AST	TO	BS	ST	MIN
4	* Jenna Goblirsch		2/5	1/2	2/2	9	0	1	1	3	2	0	0	2	19:03
5	* Dorian Downs		0/1	2/2	2/2	8	0	3	3	1	3	2	0	0	24:08
10	Terra Lucas		0/0	0/0	0/0	0	0	0	0	1	3	1	0	0	10:02
12	Tara Gilpin		0/0	0/0	0/0	0	0	0	0	0	0	0	0	0	0:59
15	Adelaide Lockett		0/1	0/0	0/0	0	0	1	1	0	0	0	0	0	12:52
21	* Natalie Greenwell		1/4	0/2	6/6	8	1	3	4	0	2	2	0	2	31:01
24	Adrionna French		0/0	0/0	0/0	0	0	0	0	1	0	0	0	0	0:59
34	Jessica Rediker		2/4	0/0	0/0	4	1	0	1	1	0	1	0	0	5:30
35	Jasmine Deaderick		0/0	0/0	0/0	0	0	0	0	0	0	0	0	0	0:59
42	* Alex Jones		11/16	0/0	1/1	23	3	8	11	0	0	1	2	2	26:30
44	* Alisa Dickerson		1/3	0/0	3/4	5	2	3	5	1	3	5	1	0	27:57
	Team						0	5	5						
	Totals		17/34	3/6	14/15	57	7	24	31	8	13	12	3	6	160
	2 PT FG			1st Half	9/22	40.9%	2nd Half	8/12	66.7%	Game	17/34	50.0%			
	3 PT FG			1st Half	3/3	100%	2nd Half	0/3	0.00%	Game	3/6	50.0%			
	Free Throws			1st Half	5/5	100%	2nd Half	9/10	90.0%	Game	14/15	93.3%			

Home: Henderson County Lady Colonels

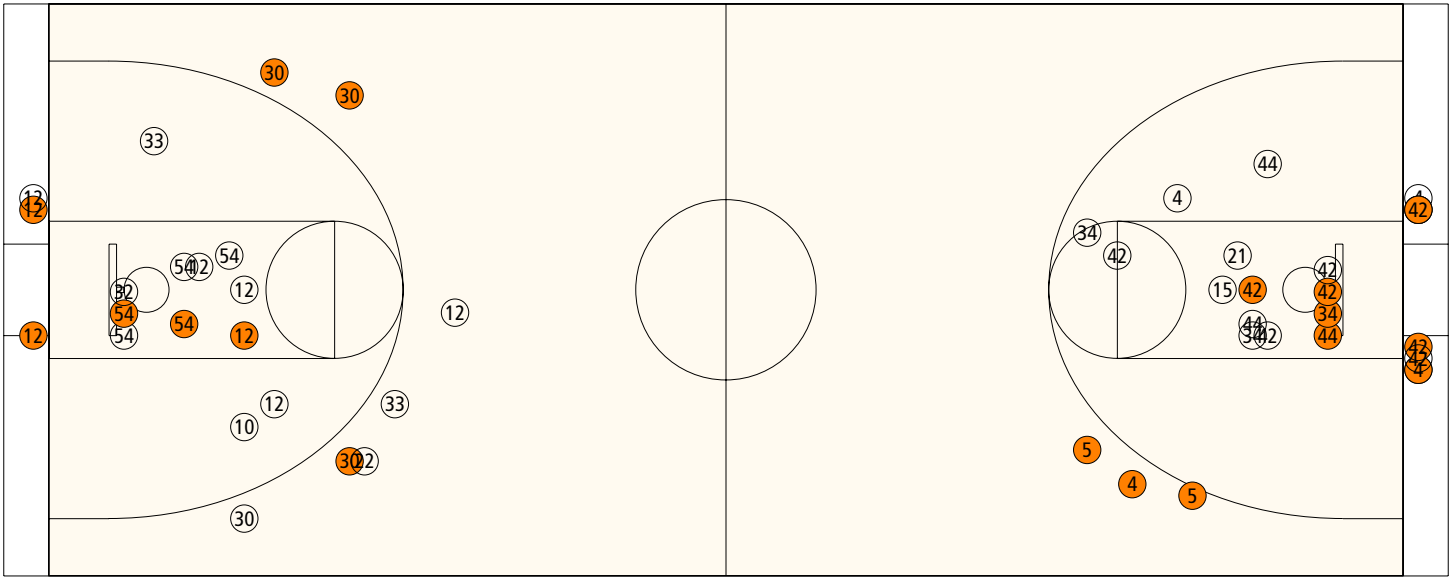
##	Name	P	FG	3 Pt	FT	PTS	ORB	DRB	TR	PF	AST	TO	BS	ST	MIN
10	Ariel Barnes		0/1	0/0	0/0	0	0	0	0	1	1	0	0	0	6:36
12	* Rinesha Soaper		3/13	0/3	0/0	6	1	0	1	3	2	2	0	3	31:01
14	Tara Dance		0/0	0/0	0/0	0	0	0	0	0	0	0	0	0	0:59
15	Krista Norman		0/0	0/1	0/0	0	0	0	0	0	0	1	0	0	0:59
20	Lauren Rodgers		0/0	0/0	0/0	0	0	0	0	0	0	0	0	0	DNP
22	Olivia Fruit		0/0	0/1	0/0	0	0	0	0	0	1	0	0	0	4:49
23	Alexia Langley		0/0	0/0	0/0	0	0	0	0	0	0	0	0	0	0:59
24	Sara Garrett		0/0	0/0	0/0	0	0	0	0	0	0	0	0	0	0:59
30	* Whitney Bingemer		1/3	3/9	0/0	11	0	3	3	2	3	3	0	0	30:20
31	Hannah Carroll		0/0	0/0	0/0	0	1	0	1	0	0	0	0	0	0:59
32	* Danielle Dixon		2/5	0/0	0/0	4	2	2	4	2	0	4	1	0	28:25
33	* Aubri Klutey		1/3	0/2	0/0	2	1	3	4	1	0	2	0	0	24:25
54	* Alyse Poindexter		3/7	0/0	4/6	10	7	2	9	3	0	1	0	1	29:29
	Team						1	2	3						
	Totals		10/32	3/16	4/6	33	13	12	25	12	7	13	1	4	160
	2 PT FG			1st Half	5/15	33.3%	2nd Half	5/17	29.4%	Game	10/32	31.3%			
	3 PT FG			1st Half	3/7	42.9%	2nd Half	0/9	0.00%	Game	3/16	18.8%			
	Free Throws			1st Half	4/6	66.7%	2nd Half	0/0	0.00%	Game	4/6	66.7%			

	ETOWN	HEND		ETOWN	HEND		ETOWN	HEND
Free Throw Pts	14	4	3Pt Points	9	9	Pts/Possession	1.10	0.65
Pts off Turnovers	15	7	2nd Chance Points	11	10	Pts off Bench	4	0
Total Rebounds	31	25	Team Rebounds	5	3	Dead Ball Reb	1	1
Off Rebound %	36.8	35.1	Def Rebound %	64.9	63.2	Total Rebound %	55.4	44.6
3Pt Efficiency	+16.7	-2.1	Def. Stops	37	24	Pts/Shot	1.21	0.65
Technical Fouls	ETOWN	None						
	HEND	None						
Officials	Terry Baldwin, Kirk Hudson, James Pouncy							

	Qtr 1	Qtr 2	Qtr 3	Qtr 4	OT 1	OT 2	OT 3	OT 4	Total
Elizabethtown Lady Panthers	18	14	11	14	0	0	0	0	57
Henderson County Lady Colonels	11	12	4	6	0	0	0	0	33

Largest Lead HEND 27 ETOWN 51 (24 pts) **Lead Changes** 1 **Number of Ties** 1
Comments: None

FIRST HALF



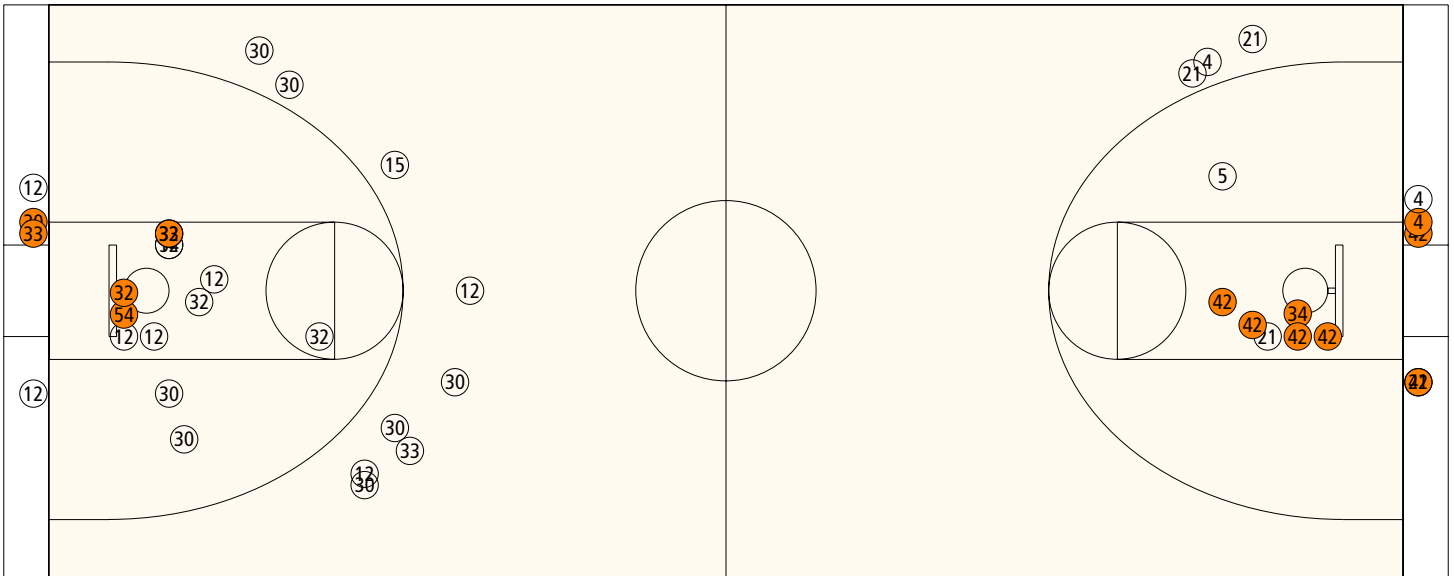
Henderson County

Shooting	Pts	Pts
2FG 5/15 (33.3%)	10	Pts/Shot 0.92
3FG 3/7 (42.9%)	9	2nd Eff Pts 6
TFG 8/22 (36.4%)		Pts off TO's 5
FT 4/6 (66.7%)	4	3Pt Eff +20.6
Scoring Distribution: 2FG 43.5% 3FG 39.1% FT 17.4%		

Elizabethtown

Shooting	Pts	Pts
2FG 9/22 (40.9%)	18	Pts/Shot 1.19
3FG 3/3 (100%)	9	2nd Eff Pts 9
TFG 12/25 (48.0%)		Pts off TO's 9
FT 5/5 (100%)	5	3Pt Eff +72.7
Scoring Distribution: 2FG 56.3% 3FG 28.1% FT 15.6%		

SECOND HALF



Henderson County

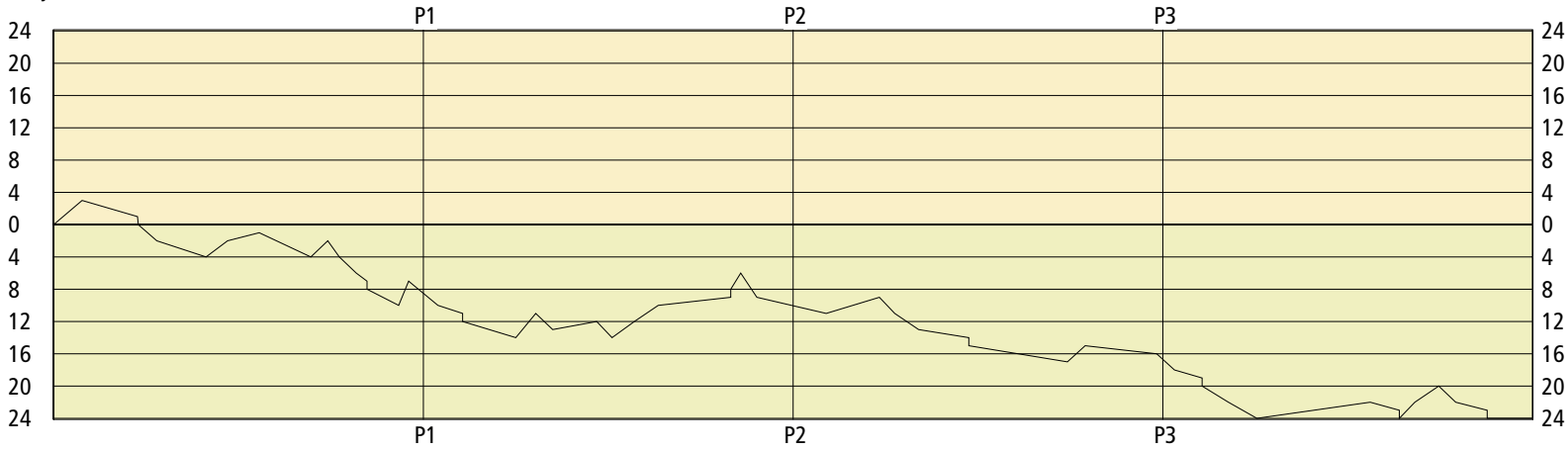
Shooting	Pts	Pts
2FG 5/17 (29.4%)	10	Pts/Shot 0.38
3FG 0/9 (0.00%)	0	2nd Eff Pts 4
TFG 5/26 (19.2%)		Pts off TO's 2
FT 0/0 (0.00%)	0	3Pt Eff -19.6
Scoring Distribution: 2FG 100.0% 3FG 0.0% FT 0.0%		

Elizabethtown

Shooting	Pts	Pts
2FG 8/12 (66.7%)	16	Pts/Shot 1.25
3FG 0/3 (0.00%)	0	2nd Eff Pts 2
TFG 8/15 (53.3%)		Pts off TO's 6
FT 9/10 (90.0%)	9	3Pt Eff -44.4
Scoring Distribution: 2FG 64.0% 3FG 0.0% FT 36.0%		

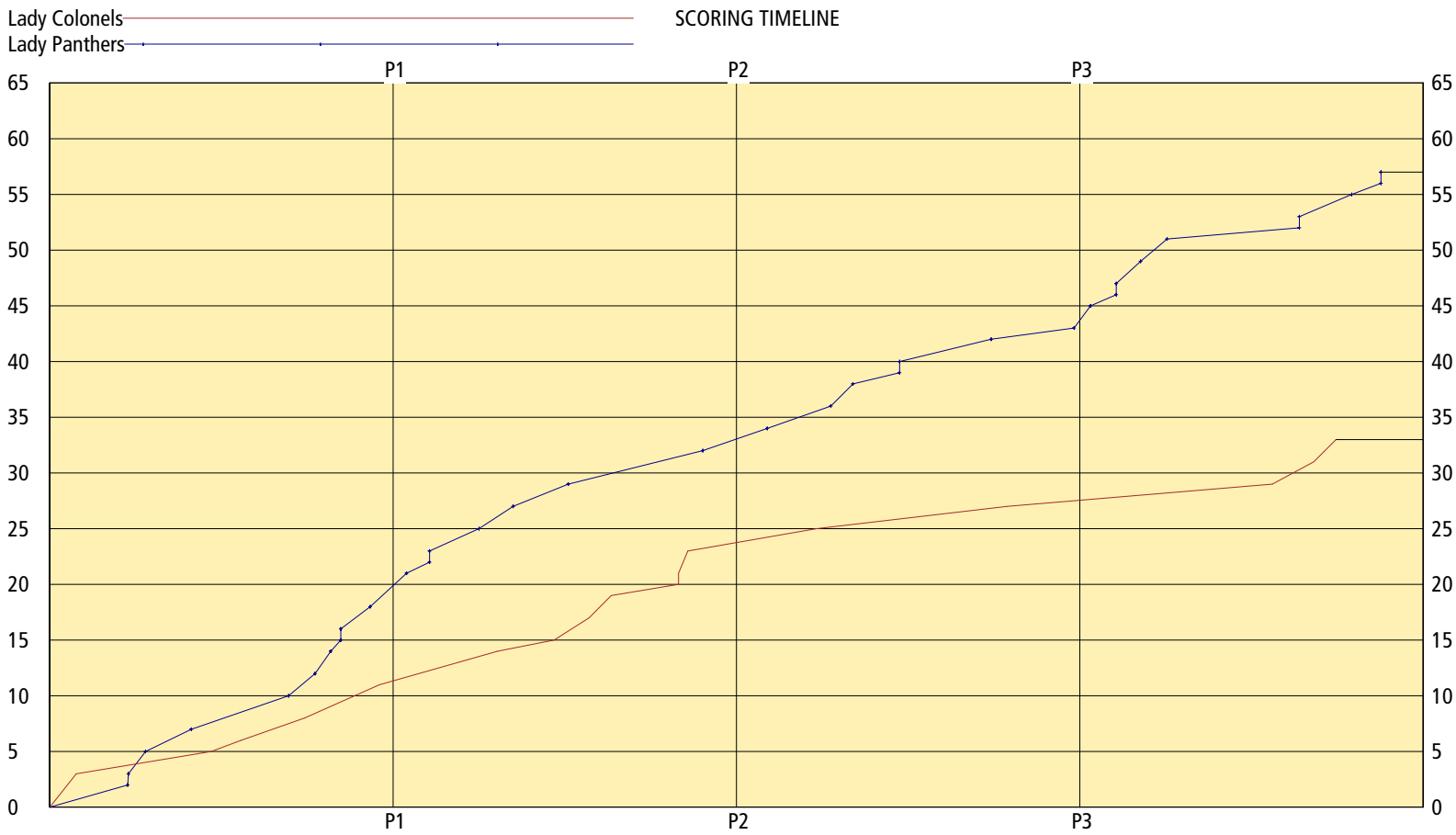
Lady Colonels

LEAD TIMELINE



Lady Panthers

SCORING TIMELINE



Largest Lead HEND 27 ETOWN 51 (24 pts) Lead Changes 1 Number of Ties 1

2008 Houchens Industries/KHSAA Girls' Sweet 16 - Play by Play Report - Scoring Only (pg 1)
Henderson County Lady Colonels vs. Elizabethtown Lady Panthers
Date: 03/14/2008 Time: 6:30 pm CST Site: Diddle Arena-Bowling Green, KY Attendance: N

Name	Action	Action	Score	Clock	Diff	Name	Action	Action
W Bingemer	3Pt Made	R Soaper Assist	3-0	1 7:23	+3 (L1)			
			3-2	1 6:11	+1	A Jones	FG Made	
A Poindexter	Personal Foul		3-3	1 6:10	(T1)	A Jones	FT Made	
			3-5	1 5:46	-2 (L2)	N Greenwell	Layup Made	J Goblirsch Assist
			3-7	1 4:42	-4	A Dickerson	Putback Made	
A Poindexter	FG Made	W Bingemer Assist	5-7	1 4:14	-2			
A Poindexter	FT Made		6-7	1 3:33	-1	A Dickerson	Personal Foul	
			6-10	1 2:26	-4	D Downs	3Pt Made	J Goblirsch Assist
R Soaper	Layup Made		8-10	1 2:04	-2			
			8-12	1 1:49	-4	A Jones	Layup Made	A Dickerson Assist
			8-14	1 1:27	-6	J Goblirsch	Layup Made	A Dickerson Assist
			8-15	1 1:13	-7	N Greenwell	FT Made	
			8-16	1 1:13	-8	N Greenwell	FT Made	
			8-18	1 0:32	-10	J Rediker	Putback Made	
W Bingemer	3Pt Made	A Barnes Assist	11-18	1 0:19	-7			

End of Period Summary Lady Colonels 11 Lady Panthers 18

Largest Lead: Lady Colonels 8 Lady Panthers 18 (10 pts)	Lead Changes: 2 Ties: 1
Lead in Period: Lady Colonels 8 Lady Panthers 18 (10 pts)	Lead Changes: 1 Ties: 1 (this period)
3 for 7 oppo pts	1 for 0 oppo pts
1 for 1 pts	2 for 4 pts
4/9 for 44.4 %	7/13 for 53.8 %
1/2 for 50.0 %	3/3 for 100 %

			11-21	2 7:41	-10	J Goblirsch	3Pt Made	N Greenwell Assist
A Barnes	Personal Foul		11-22	2 7:09	-11	N Greenwell	FT Made	
			11-23	2 7:09	-12	N Greenwell	FT Made	
			11-25	2 6:00	-14	A Jones	Layup Made	N Greenwell Assist
W Bingemer	3Pt Made	O Fruit Assist	14-25	2 5:34	-11			
			14-27	2 5:12	-13	A Jones	Layup Made	T Lucas Assist
A Poindexter	FT Made		15-27	2 4:15	-12	D Downs	Personal Foul	
			15-29	2 3:55	-14	A Jones	Putback Made	
A Poindexter	Putback Made		17-29	2 3:26	-12			
R Soaper	Layup Made		19-29	2 2:55	-10			
A Poindexter	FT Made		20-29	2 1:21	-9	T Lucas	Personal Foul	
A Poindexter	FT Made		21-29	2 1:21	-8			
R Soaper	FG Made		23-29	2 1:08	-6			
			23-32	2 0:47	-9	D Downs	3Pt Made	T Lucas Assist

End of Period Summary Lady Colonels 23 Lady Panthers 32

Largest Lead: Lady Colonels 11 Lady Panthers 25 (14 pts)	Lead Changes: 2 Ties: 1
Lead in Period: Lady Colonels 11 Lady Panthers 25 (14 pts)	Lead Changes: 0 Ties: 0 (this period)
3 for 2 oppo pts	4 for 5 oppo pts
5 for 5 pts	3 for 5 pts
4/13 for 30.8 %	5/12 for 41.7 %
3/4 for 75.0 %	2/2 for 100 %

			23-34	3 7:17	-11	A Jones	Putback Made	
W Bingemer	Layup Made	R Soaper Assist	25-34	3 6:08	-9			
			25-36	3 5:48	-11	A Jones	FG Made	
			25-38	3 5:17	-13	A Jones	Layup Made	A Dickerson Assist

2008 Houchens Industries/KHSAA Girls' Sweet 16 - Play by Play Report - Scoring Only (pg 2)
Henderson County Lady Colonels vs. Elizabethtown Lady Panthers
Date: 03/14/2008 Time: 6:30 pm CST Site: Diddle Arena-Bowling Green, KY Attendance: N

Name	Action	Action	Score	Clock	Diff	Name	Action	Action
R Soaper	Personal Foul		25-39	3 4:12	-14	D Downs	FT Made	
			25-40	3 4:12	-15	D Downs	FT Made	
			25-42	3 2:04	-17	J Rediker	FG Made	D Downs Assist
D Dixon	FG Made	W Bingemer Assist	27-42	3 1:41	-15			
			27-43	3 0:08	-16	A Dickerson	FT Made	

End of Period Summary Lady Colonels 27 Lady Panthers 43

Largest Lead: Lady Colonels 25 Lady Panthers 42 (17 pts)

Lead in Period: Lady Colonels 25 Lady Panthers 42 (17 pts)

1 for 2 oppo pts

2 for 0 pts

2/14 for 14.3 %

0/0 for 0.00 %

Turnovers

2nd Chances

Field Goals

Free Throws

Lead Changes: 2 Ties: 1

Lead Changes: 0 Ties: 0 (this period)

4 for 0 oppo pts

1 for 2 pts

4/7 for 57.1 %

3/4 for 75.0 %

W Bingemer	Personal Foul		27-45	4 7:45	-18	A Jones	FG Made	
			27-46	4 7:09	-19	A Dickerson	FT Made	
			27-47	4 7:09	-20	A Dickerson	FT Made	
			27-49	4 6:35	-22	A Jones	Layup Made	D Downs Assist
			27-51	4 5:58	-24	J Goblirsch	Layup Made	D Downs Assist
A Klutey	Layup Made	W Bingemer Assist	29-51	4 3:31	-22			
			29-52	4 2:53	-23	J Goblirsch	FT Made	
			29-53	4 2:53	-24	J Goblirsch	FT Made	
A Poindexter	Putback Made		31-53	4 2:33	-22			
D Dixon	Putback Made		33-53	4 2:02	-20			
			33-55	4 1:40	-22	A Jones	FG Made	T Lucas Assist
			33-56	4 0:59	-23	N Greenwell	FT Made	
			33-57	4 0:59	-24	N Greenwell	FT Made	

End of Period Summary Lady Colonels 33 Lady Panthers 57

Largest Lead: Lady Colonels 27 Lady Panthers 51 (24 pts)

Lead in Period: Lady Colonels 27 Lady Panthers 51 (24 pts)

6 for 4 oppo pts

5 for 4 pts

3/12 for 25.0 %

0/0 for 0.00 %

Turnovers

2nd Chances

Field Goals

Free Throws

Lead Changes: 2 Ties: 1

Lead Changes: 0 Ties: 0 (this period)

3 for 2 oppo pts

1 for 0 pts

4/8 for 50.0 %

6/6 for 100 %

OFFICIAL BASKETBALL BOX SCORE

03/14/2008 6:30 pm CST

Diddle Arena
Bowling Green, KY

Elizabethtown Lady Panthers vs Henderson County Lady Colonels

Final Box Score

No.	Elizabethtown Lady Panthers	Total FG		3-point		Free throw		Rebounds			F	TP	A	TO	BLK	STL	MIN
		FG	FGA	FG	FGA	FT	FTA	Off	Def	Tot							
4	Jenna Goblirsch	3	7	1	2	2	2	0	1	1	3	9	2	0	0	2	19:03
5	Dorian Downs	2	3	2	2	2	2	0	3	3	1	8	3	2	0	0	24:08
10	Terra Lucas	0	0	0	0	0	0	0	0	0	1	0	3	1	0	0	10:02
12	Tara Gilpin	0	0	0	0	0	0	0	0	0	0	0	0	0	0	0	0:59
15	Adelaide Luckett	0	1	0	0	0	0	0	1	1	0	0	0	0	0	0	12:52
21	Natalie Greenwell	1	6	0	2	6	6	1	3	4	0	8	2	2	0	2	31:01
44	Alisa Dickerson	1	3	0	0	3	4	2	3	5	1	5	3	5	1	0	27:57
42	Alex Jones	11	16	0	0	1	1	3	8	11	0	23	0	1	2	2	26:30
34	Jessica Rediker	2	4	0	0	0	0	1	0	1	1	4	0	1	0	0	5:30
24	Adrionna French	0	0	0	0	0	0	0	0	0	1	0	0	0	0	0	0:59
35	Jasmine Deaderick	0	0	0	0	0	0	0	0	0	0	0	0	0	0	0	0:59
Team (Included in Totals)								0	5	5			0				
Totals		20	40	3	6	14	15	7	24	31	8	57	13	12	3	6	160
Total FG%: 1st half 12 - 25 (48.0%) 2nd half 8 - 15 (53.3%) Game 20 - 40 (50.0%) Deadball 3Pt FG%: 1st half 3 - 3 (100%) 2nd half 0 - 3 (0.00%) Game 3 - 6 (50.0%) rebounds FT%: 1st half 5 - 5 (100%) 2nd half 9 - 10 (90.0%) Game 14 - 15 (93.3%) 1																	
No.	Henderson County Lady Colonels	Total FG		3-point		Free throw		Rebounds			F	TP	A	TO	BLK	STL	MIN
		FG	FGA	FG	FGA	FT	FTA	Off	Def	Tot							
10	Ariel Barnes	0	1	0	0	0	0	0	0	0	1	0	1	0	0	0	6:36
12	Rinesha Soaper	3	16	0	3	0	0	1	0	1	3	6	2	2	0	3	31:01
14	Tara Dance	0	0	0	0	0	0	0	0	0	0	0	0	0	0	0	0:59
15	Krista Norman	0	1	0	1	0	0	0	0	0	0	0	0	1	0	0	0:59
20	Lauren Rodgers	0	0	0	0	0	0	0	0	0	0	0	0	0	0	0	DNP
30	Whitney Bingemer	4	12	3	9	0	0	0	3	3	2	11	3	3	0	0	30:20
54	Alyse Poindexter	3	7	0	0	4	6	7	2	9	3	10	0	1	0	1	29:29
32	Danielle Dixon	2	5	0	0	0	0	2	2	4	2	4	0	4	1	0	28:25
33	Aubri Klutey	1	5	0	2	0	0	1	3	4	1	2	0	2	0	0	24:25
22	Olivia Fruit	0	1	0	1	0	0	0	0	0	0	0	1	0	0	0	4:49
23	Alexia Langley	0	0	0	0	0	0	0	0	0	0	0	0	0	0	0	0:59
24	Sara Garrett	0	0	0	0	0	0	0	0	0	0	0	0	0	0	0	0:59
31	Hannah Carroll	0	0	0	0	0	0	1	0	1	0	0	0	0	0	0	0:59
Team (Included in Totals)								1	2	3			0				
Totals		13	48	3	16	4	6	13	12	25	12	33	7	13	1	4	160
Total FG%: 1st half 8 - 22 (36.4%) 2nd half 5 - 26 (19.2%) Game 13 - 48 (27.1%) Deadball 3Pt FG%: 1st half 3 - 7 (42.9%) 2nd half 0 - 9 (0.00%) Game 3 - 16 (18.8%) rebounds FT%: 1st half 4 - 6 (66.7%) 2nd half 0 - 0 (0.00%) Game 4 - 6 (66.7%) 1																	

Technical Fouls: None

Attendance: N

Officials: Terry Baldwin, Kirk Hudson, James Pouncy

Score by Period	1st	2nd	3rd	4th	Final	Record	Overall	Conf
Elizabethtown Lady Panthers	18	14	11	14	57	Lady Panthers		
Henderson County Lady Colonels	11	12	4	6	33	Lady Colonels		

Lady Colonels Lady Panthers	
Points off Turnovers	7 15
Points in the Paint	18 26
3pt Efficiency	-2.1 +16.7
Largest Lead	27 51 (24 pts)

Lady Colonels Lady Panthers	
Second Effort Points	10 11
3 Point Points	9 9
Points/Shot	0.65 1.21
Lead Changes	1

Lady Colonels Lady Panthers	
Bench Points	0 4
Free Throw Points	4 14
Defensive Stops	24 37
Number of Ties	1

Game comments: None